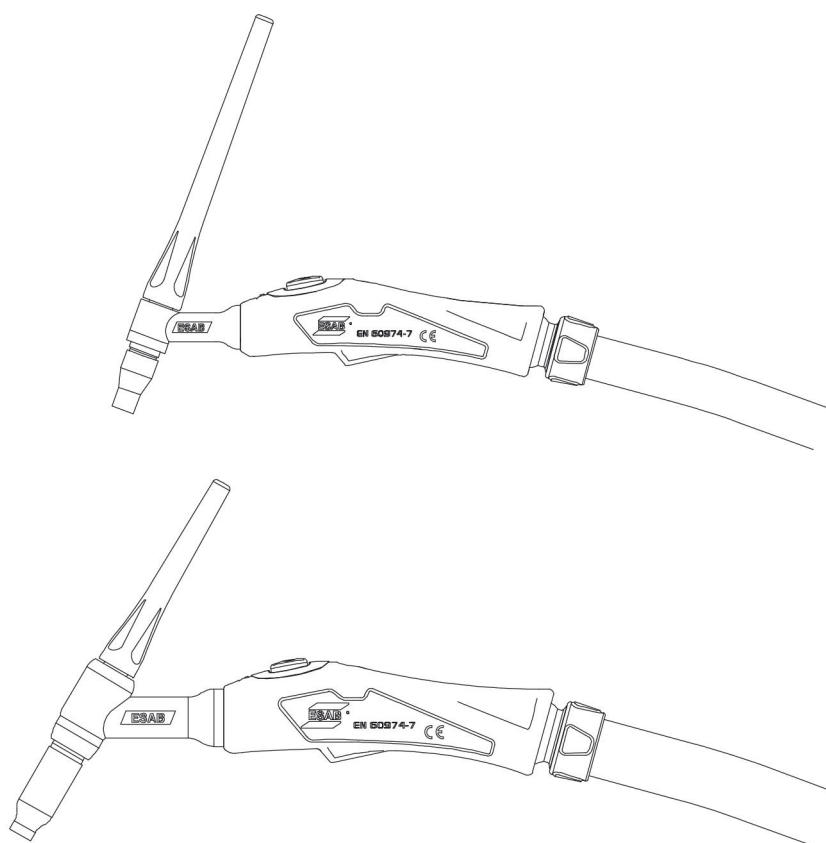




TXH™

TXH 121, TXH 151, TXH 201, TXH 251, TXH 252, TXH 401



Spare parts list

OVERVIEW OF TORCHES	3
SPARE PARTS	6
TXH 121, TXH 121r, TXH 121F, TXH 121Fr, TXH 121V	6
TXH 151, TXH 151r, TXH 151F, TXH 151Fr, TXH 151V	8
TXH 201, TXH 201r, TXH 201F, TXH 201Fr, TXH 201V	10
TXH 251w, TXH 251wr, TXH 251wF, TXH 251wFr, TXH 252w, TXH 252wF	12
TXH 401w, TXH 401wr, TXH 401wF, TXH 401wFr	14
INSTRUCTIONS TO REPLACE THE MICRO SWITCH	16
WEAR PARTS	17

OVERVIEW OF TORCHES

F = Flexible body, V = Valve, w = Water cooled, HD = Heavy Duty, W = Water

Ordering no.	Type	Torch head			OKC 25		OKC 50		Conn. ESAB std		Conn. Tig 150i/200i		W
		Switch	Valve	F head	4m	8m	4m	8m	4m	8m	4m	8m	
0700300522	TXH™ 121	X			X				X				
0700300523	TXH™ 121V		X		X				X				
0700300524	TXH™ 121	X					X		X				
0700300525	TXH™ 121F	X		X	X				X				
0700300526	TXH™ 121F	X		X			X		X				
0700300527	TXH™ 121	X				X				X			
0700300528	TXH™ 121V		X			X				X			
0700300529	TXH™ 121	X						X		X			
0700300530	TXH™ 121F	X		X		X				X			
0700300531	TXH™ 121F	X		X				X		X			
0700300532	TXH™ 121	X			X						X		
0700300533	TXH™ 121F	X		X	X						X		
0700300534	TXH™ 121	X				X						X	
0700300535	TXH™ 121F	X		X		X						X	
0700300536	TXH™ 151	X			X				X				
0700300537	TXH™ 151V		X		X				X				
0700300538	TXH™ 151	X					X		X				
0700300539	TXH™ 151V		X				X		X				
0700300540	TXH™ 151F	X		X	X				X				
0700300541	TXH™ 151F	X		X			X		X				
0700300542	TXH™ 151	X				X				X			
0700300543	TXH™ 151V		X			X				X			
0700300544	TXH™ 151	X						X		X			
0700300545	TXH™ 151V		X					X		X			
0700300546	TXH™ 151F	X		X		X				X			
0700300547	TXH™ 151F	X		X				X		X			
0700300548	TXH™ 151	X			X						X		
0700300549	TXH™ 151F	X		X	X						X		
0700300550	TXH™ 151	X				X						X	
0700300551	TXH™ 151F	X		X		X						X	
0700300552	TXH™ 201	X					X		X				
0700300553	TXH™ 201V		X					X		X			
0700300554	TXH™ 201F	X		X				X		X			
0700300555	TXH™ 201	X						X		X			

OVERVIEW OF TORCHES

Ordering no.	Type	Torch head			OKC 25		OKC 50		Conn. ESAB std		Conn. Tig 150i/ 200i		W
		Switch	Valve	F head	4m	8m	4m	8m	4m	8m	4m	8m	
0700300556	TXH™ 201V		X					X		X			
0700300557	TXH™ 201F	X		X				X		X			
0700300558	TXH™ 201	X			X			X		X			
0700300559	TXH™ 201F	X		X	X				X				
0700300560	TXH™ 201	X				X				X			
0700300561	TXH™ 251w	X					X		X				X
0700300562	TXH™ 251wF	X		X			X		X				X
0700300563	TXH™ 251w	X					X		X				X
0700300564	TXH™ 251wF	X		X			X		X				X
0700300855	TXH™ 252w	X					X		X				X
0700300858	TXH™ 252wF	X		X			X		X				X
0700300856	TXH™ 252w	X					X		X				X
0700300859	TXH™ 252wF	X					X		X				X
0700300565	TXH™ 401w	X					X		X				X
0700300566	TXH™ 401w HD	X					X		X				X
0700300567	TXH™ 401w	X					X		X				X
0700300568	TXH™ 401w HD	X					X		X				X

F = Flexible body, w = Water cooled, r = remote, HD = Heavy Duty

Ordering no.	Type	Torch body		OKC 50		Connection ESAB std		Water
		Switch	Flexible head	4 m	8 m	4 m	8 m	
0700 300 620	TXH™ 121r	X		X		X		
0700 300 621	TXH™ 121Fr	X	X	X		X		
0700 300 622	TXH™ 121r	X			X		X	
0700 300 623	TXH™ 121Fr	X	X		X		X	
0700 300 624	TXH™ 151r	X		X		X		
0700 300 625	TXH™ 151Fr	X	X	X		X		
0700 300 626	TXH™ 151r	X			X		X	
0700 300 627	TXH™ 151Fr	X	X		X		X	
0700 300 628	TXH™ 201r	X		X		X		
0700 300 629	TXH™ 201Fr	X	X	X		X		

Ordering no.	Type	Torch body		OKC 50		Connection ESAB std		Water
		Switch	Flexible head	4 m	8 m	4 m	8 m	
0700 300 630	TXH™ 201r	X			X		X	
0700 300 631	TXH™ 201Fr	X	X		X		X	
0700 300 632	TXH™ 251wr	X		X		X		X
0700 300 633	TXH™ 251wFr	X	X	X		X		X
0700 300 634	TXH™ 251wr	X			X		X	X
0700 300 635	TXH™ 251wFr	X	X		X		X	X
0700 300 636	TXH™ 401wr	X		X		X		X
0700 300 637	TXH™ 401wr HD	X		X		X		X
0700 300 638	TXH™ 401wr	X			X		X	X
0700 300 639	TXH™ 401wr HD	X			X		X	X
0459 839 087	Spare Parts List							

Ordering no.	Type	Torch head		OKC 50			Connection ESAB std			Water
		Switch	F head	8m	12m	16m	8m	12m	16m	
0700300682	TXH™ 251WF	X	X		X			X		X
0700300683	TXH251™ WF	X	X			X			X	X
0700300806	TXH401™ WF	X	X	X			X			X
0700300662	TXH™ 201 Wheel Remote	X	X	X			X			
0700300663	TXH™ 251W Wheel Remote	X	X	X			X			X
0700300659	TXH™ 251W Wheel Remote	X	X	X			X			X
0700300660	TXH™ 401W Wheel Remote	X	X	X			X			X



NOTE!

CAN based adapter is to be used for connection of above TIG torches with remote function, see the ACCESSORIES appendix in the TXH Instruction manual.

Spare parts may be ordered through your nearest ESAB dealer, see the back cover of this document. When ordering, please state product type, serial number, denominations and ordering numbers according to the spare parts list. This facilitates dispatch and ensures correct delivery.

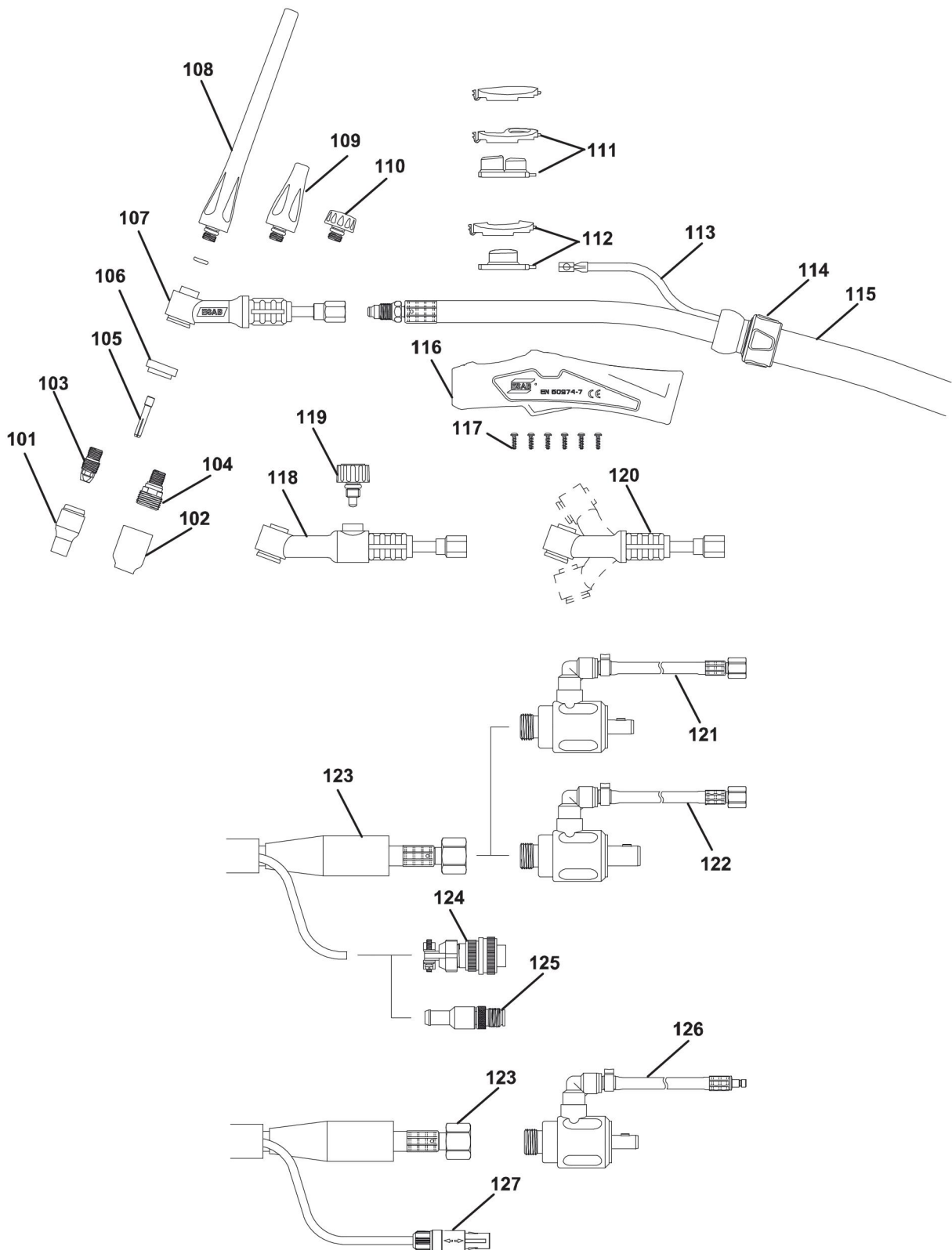
Maintenance and repair work should be performed by an experienced person, and electrical work only by a trained electrician. Use only recommended spare parts.

SPARE PARTS

TXH 121, TXH 121r, TXH 121F, TXH 121Fr, TXH 121V

w = Wear parts, see the WEAR PARTS chapter in this manual.

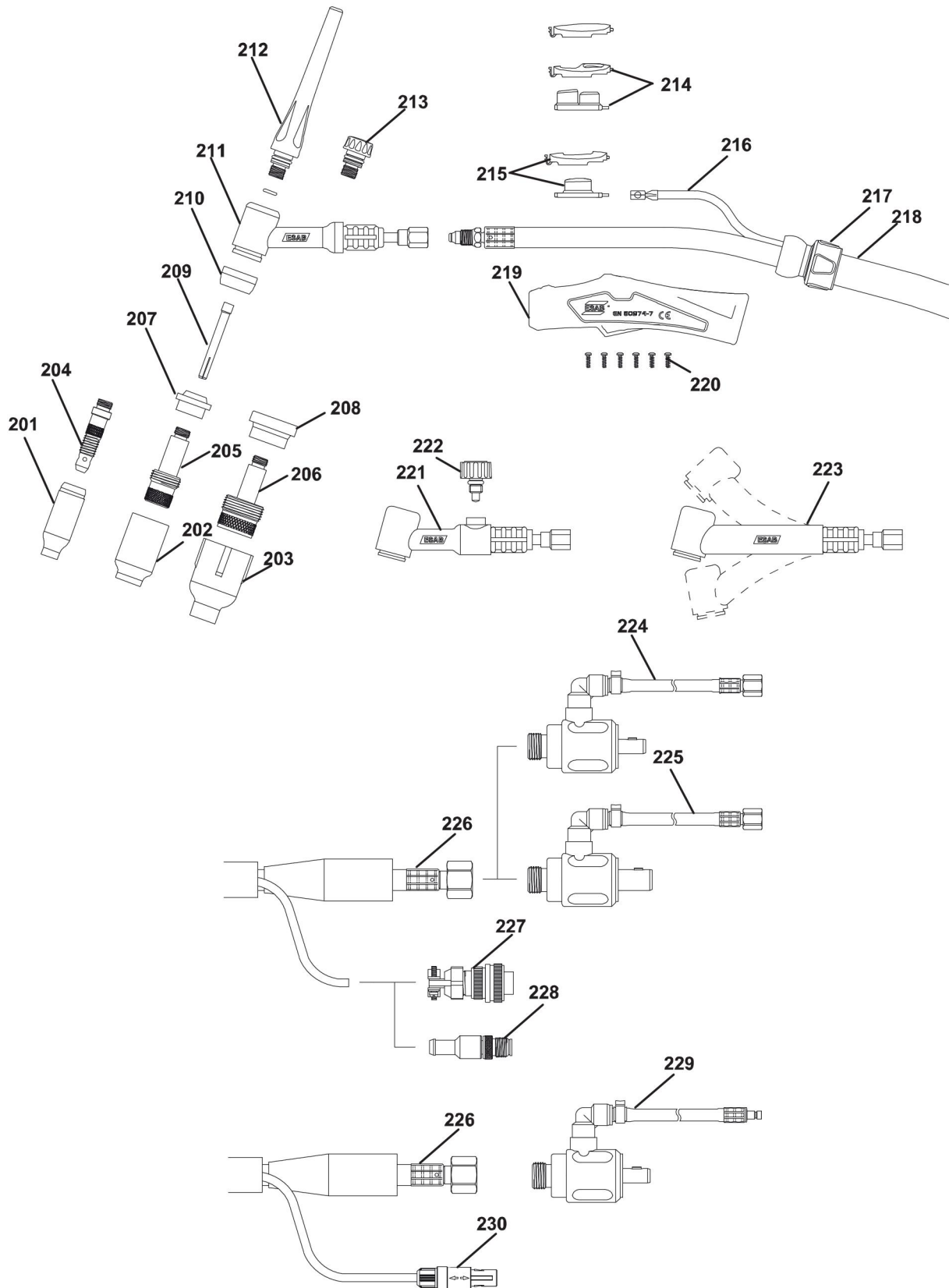
Item	Qty	Ordering no.	Denomination	Notes
101	-	w	Gas nozzle standard	
102	-	w	Gas nozzle for gas lens	
103	-	w	Collet body standard	
104	-	w	Collet body with gas lens	
105	-	w	Collet standard for gas lens	
106	-	0366 960 017	Heat shield	
107	1	0700 300 569	Torch head rigid	
108	1	0365 310 051	Back cap long	
109	1	0365 310 050	Back cap medium	
110	1	0365 310 049	Back cap short	
111	1	0700 300 573	Three button remote switch kit	
112	1	0700 300 572	Momentary switch kit	
113	1	0700 300 574	Switch leads	4 m
	1	0700 300 575	Switch leads	8 m
114	1	0700 300 578	Small knuckle joint	Fits TXH 121, 151, and 251W
115	1	0700 300 579	Complete cover assembly	4 m / 13.1 ft
	1	0700 300 580	Complete cover assembly	8 m / 26.2 ft
116	1	0700 300 576	Handle small	
117	1	0700 300 577	Screw pack	
118	1	0700 300 570	Torch head valved	
119	1	0700 300 581	Gas valve	
120	1	0700 300 571	Torch head flexible	
121	1	0700 300 588	Power gas adaptor	OKC50
122	1	0700 300 587	Power gas adaptor	OKC25
123	1	0700 300 582	Power cable	4 m
	1	0700 300 583	Power cable	8 m
124	1	0700 300 584	2 pin plug	
125	1	0700 300 585	5 pin plug	M12
126	1	0700 300 586	Power gas adaptor	OKC25 with QF gas connection
127	1	0700 300 589	2 Pin plug	Caddy



TXH 151, TXH 151r, TXH 151F, TXH 151Fr, TXH 151V

w = Wear parts, see the WEAR PARTS chapter in this manual.

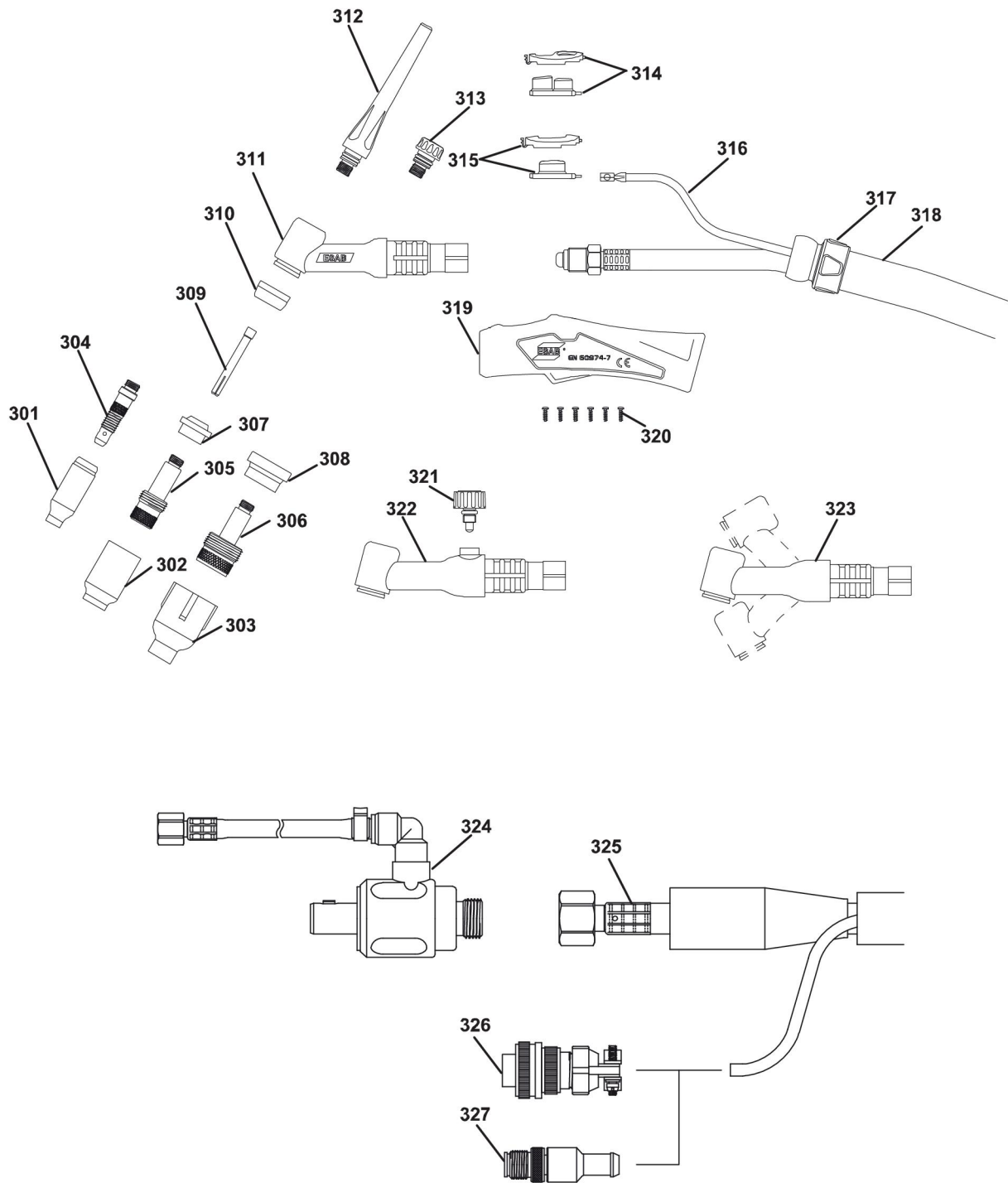
Item	Qty	Ordering no.	Denomination	Notes
201	-	w	Gas nozzle standard	
202	-	w	Gas nozzle for gas lens	
203	-	w	Extra large gas nozzle for extra large gas lens	
204	-	w	Collet body standard	
205	-	w	Collet body with gas lens	
206	-	w	Collet body with extra large gas lens	
207	-	0366 960 020	Gas Lens Insulator	Use with item 210
208	-	0366 960 021	Insulator Large Gas Lens	Use with item 210
209	-	w	Collet standard for gas lens	
210	-	0366 960 016	Cup gasket	
211	1	0700 300 590	Torch head rigid	
212	-	0157 123 029	Back cap long	
213	-	0157 123 028	Back cap short	
214	1	0700 300 573	Three button remote switch kit	
215	1	0700 300 572	Momentary switch kit	
216	1	0700 300 574	Switch lead	4 m
	1	0700 300 575	Switch lead	8 m
217	1	0700 300 578	Small knuckle joint	Fits TXH 121, 151, and 251W
218	1	0700 300 579	Complete cover assembly	4 m / 13.1 ft
	1	0700 300 580	Complete cover assembly	8 m / 26.2 ft
219	1	0700 300 576	Handle small	
220	1	0700 300 577	Screw pack	
221	1	0700 300 591	Torch head valved	
222	1	0700 300 581	Gas valve	
223	1	0700 300 592	Torch head flexible	
224	1	0700 300 587	Power gas adaptor	OKC25
225	1	0700 300 588	Power gas adaptor	OKC50
226	1	0700 300 582	Power cable	4 m
	1	0700 300 583	Power cable	8 m
227	1	0700 300 584	2 pin plug	
228	1	0700 300 585	5 pin plug	M12
229	1	0700 300 586	Power gas adaptor	OKC25 with QF gas connection
230	1	0700 300 589	2 pin plug	Caddy



TXH 201, TXH 201r, TXH 201F, TXH 201Fr, TXH 201V

w = Wear parts, see the WEAR PARTS chapter in this manual.

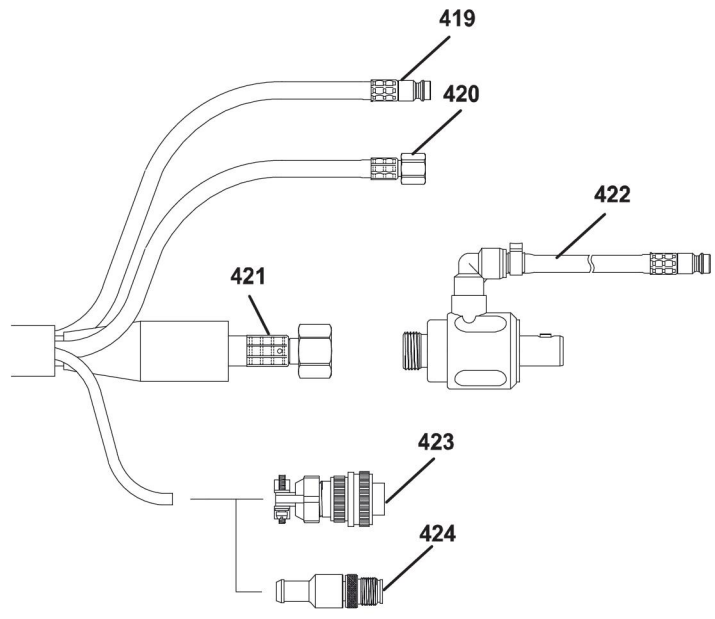
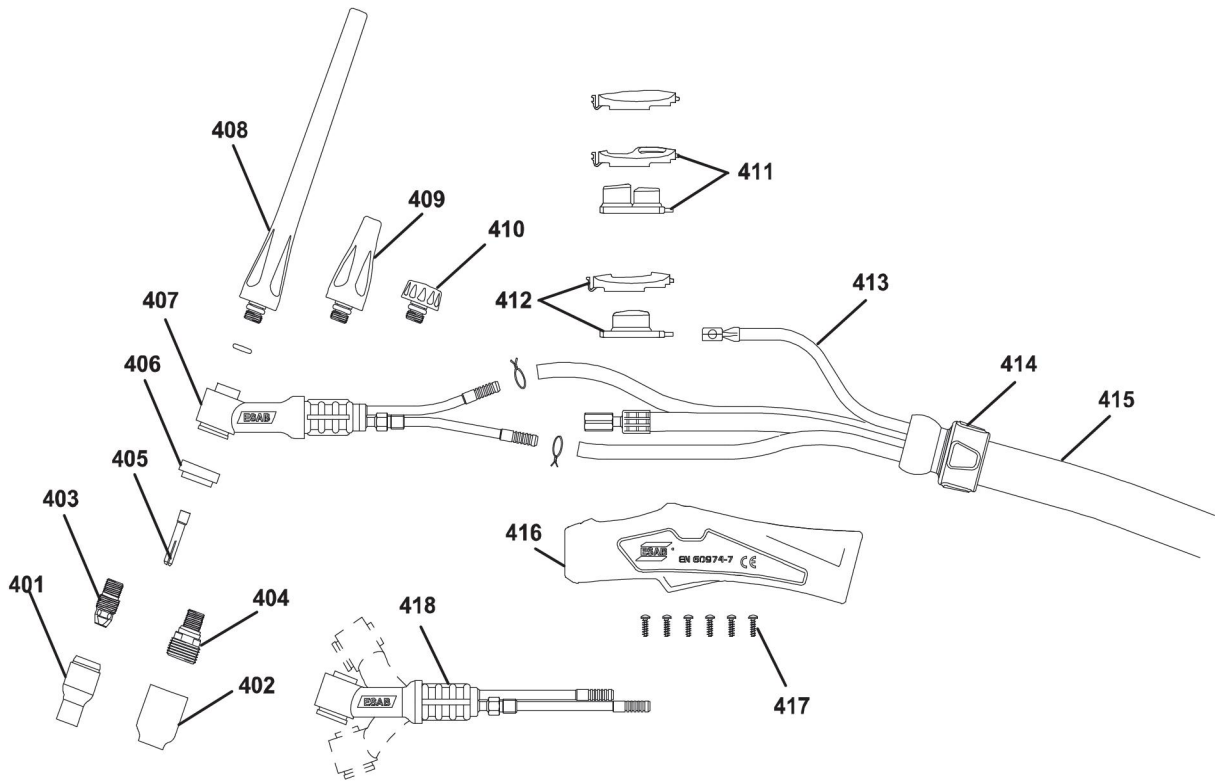
Item	Qty	Ordering no.	Denomination	Notes
301	-	w	Gas nozzle standard	
302	-	w	Gas nozzle for gas lens	
303	-	w	Extra large gas nozzle for extra large gas lens	
304	-	w	Collet body standard	
305	-	w	Collet body with gas lens	
306	-	w	Collet body with extra large gas lens	
307	-	0366 960 020	Gas Lens Insulator	Use with item 310
308	-	0366 960 021	Insulator Large Gas Lens	Use with item 310
309	-	w	Collet standard for gas lens	
310	-	0366 960 016	Cup gasket	
311	1	0700 300 593	Torch head rigid	
312	-	0157 123 029	Back cap long	
313	-	0157 123 028	Back cap short	
314	1	0700 300 573	Three button remote switch kit	
315	1	0700 300 572	Momentary switch kit	
316	1	0700 300 574	Switch lead	4 m
	1	0700 300 575	Switch lead	8 m
317	1	0700 300 596	Large knuckle joint	Fits TXH 201 and 401W
318	1	0700 300 597	Complete cover assembly	4 m / 13.1 ft
	1	0700 300 598	Complete cover assembly	8 m / 26.2 ft
319	1	0700 300 600	Handle large	
320	1	0700 300 577	Screw pack	
321	1	0700 300 599	Gas valve	
322	1	0700 300 594	Torch head valved	
323	1	0700 300 595	Torch head flexible	
324	1	0700 300 588	Power gas adaptor	
325	1	0700 300 601	Power cable	4 m
	1	0700 300 602	Power cable	8 m
326	1	0700 300 584	2 pin plug	
327	1	0700 300 585	5 pin plug	M12



**TXH 251w, TXH 251wr, TXH 251wF, TXH 251wFr,
TXH 252w, TXH 252wF**

w = Wear parts, see the WEAR PARTS chapter in this manual.

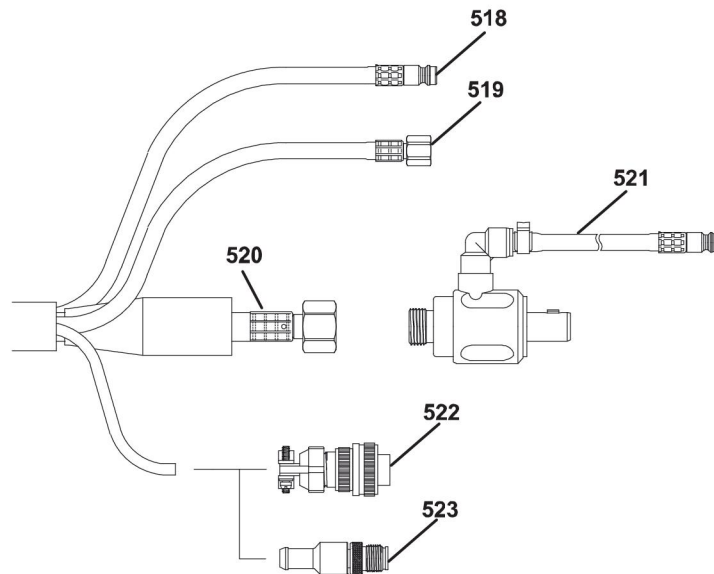
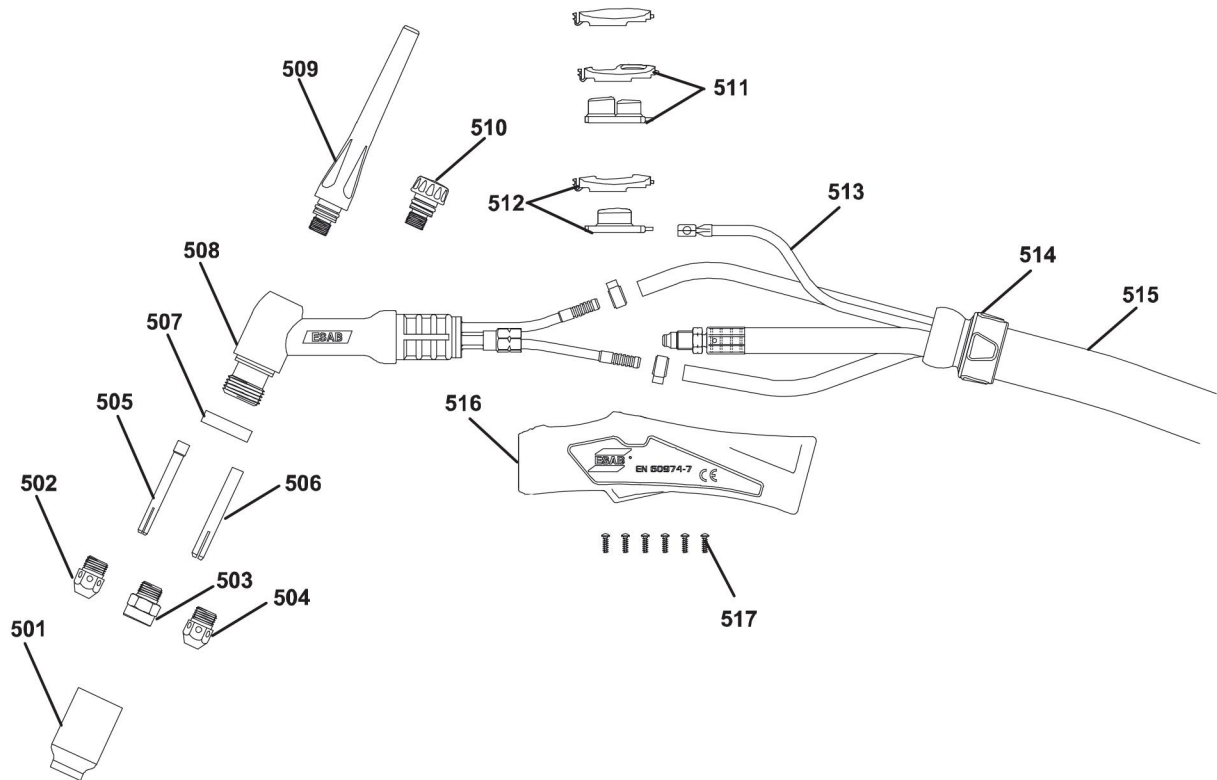
Item	Qty	Ordering no.	Denomination	Notes
401	-	w	Gas nozzle standard	
402	-	w	Gas nozzle for gas lens	
403	-	w	Collet body standard	
404	-	w	Collet body with gas lens	
405	-	w	Collet standard for gas lens	
406	-	0366 960 017	Cup gasket	
407	1	0700 300 603	Torch head rigid	
408	-	0365 310 051	Back cap long	
409	-	0365 310 050	Back cap medium	
410	-	0365 310 049	Back cap short	
411	1	0700 300 573	Three button remote switch kit	
412	1	0700 300 572	Momentary switch kit	
413	1	0700 300 574	Switch leads	4 m
	1	0700 300 575	Switch leads	8 m
414	1	0700 300 578	Small knuckle joint	Fits TXH 121, 151, 251W and 252W
415	1	0700 300 579	Complete cover assembly	4 m / 13.1 ft
	1	0700 300 580	Complete cover assembly	8 m / 26.2 ft
416	1	0700 300 576	Handle small	
417	1	0700 300 577	Screw pack	
418	1	0700 300 604	Torch head flexible	
419	1	0700 300 609	Water inlet hose	4 m
	1	0700 300 610	Water inlet hose	8 m
420	1	0700 300 607	Gas hose	4 m
	1	0700 300 608	Gas hose	8 m
421	1	0700 300 853	Power cable	4 m
	1	0700 300 854	Power cable	8 m
422	1	0700 300 611	Power water adaptor	OKC50
423	1	0700 300 584	2 pin plug	
424	1	0700 300 585	5 pin plug	M12



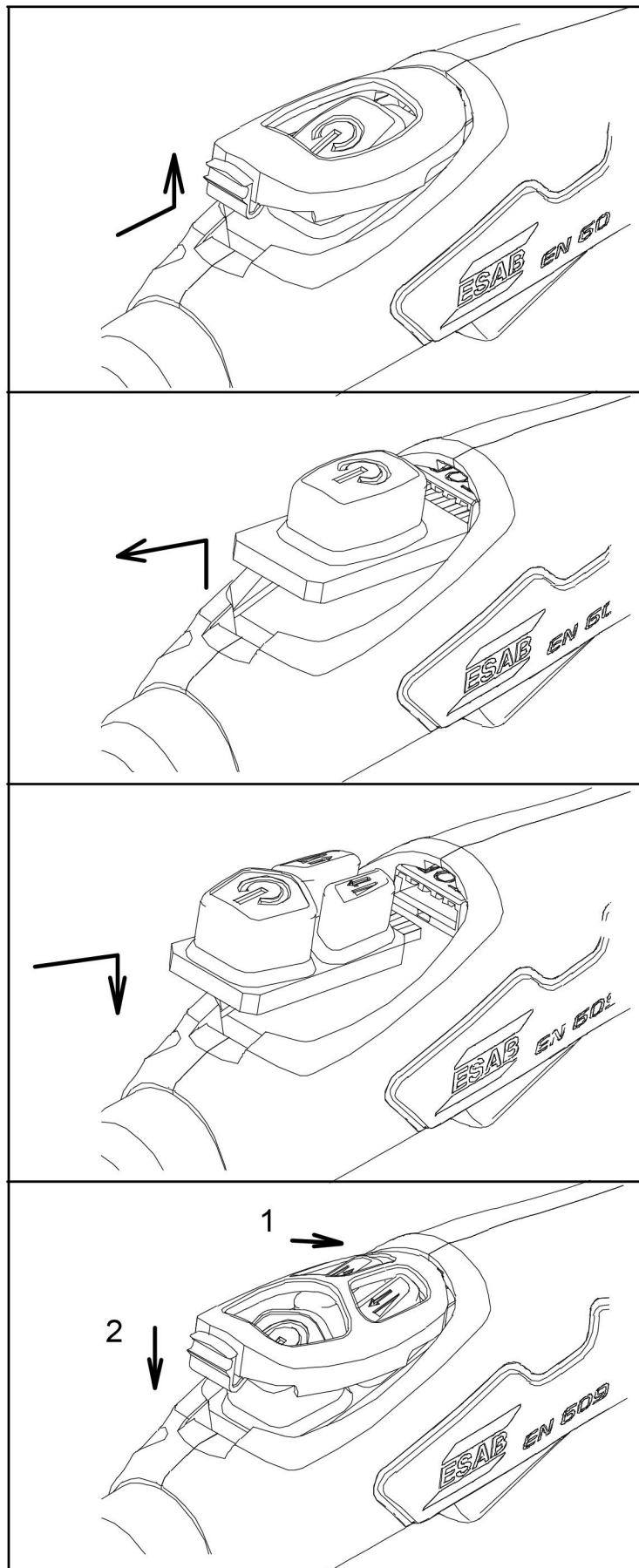
TXH 401w, TXH 401wr, TXH 401wF, TXH 401wFr

w = Wear parts, see the WEAR PARTS chapter in this manual.

Item	Qty	Ordering no.	Denomination	Notes
501	-	w	Collet body with gas lens	
502	-	0157 123 081	Collet body	1.0 - 2.4 mm
503	-	w	Gas nozzle standard	
504	-	0157 123 082	Collet body	3.2 - 4.8 mm
505	-	w	Collet standard for gas lens	
506	-	w	Collet body Heavy Duty	
507	-	0366 960 018	Cup gasket	
508	1	0700 300 612	Torch head rigid	
509	-	0157 123 029	Back cap long	
510	-	0157 123 028	Back cap short	
511	1	0700 300 573	Three button remote switch kit	
512	1	0700 300 572	Momentary switch kit	
513	1	0700 300 574	Switch lead	4 m
	1	0700 300 575	Switch lead	8 m
514	1	0700 300 596	Large knuckle joint	Fits TXH 201 and 401W
515	1	0700 300 597	Complete cover assembly	4 m / 13.1 ft
	1	0700 300 598	Complete cover assembly	8 m / 26.2 ft
516	1	0700 300 600	Handle large	
517	1	0700 300 577	Screw pack	
518	1	0700 300 609	Water inlet hose	4 m
	1	0700 300 610	Water inlet hose	8 m
519	1	0700 300 615	Gas hose	4 m
	1	0700 300 616	Gas hose	8 m
520	1	0700 300 613	Power cable	4 m
	1	0700 300 614	Power cable	8 m
521	1	0700 300 611	Power water adaptor	OKC 50
522	1	0700 300 584	2 pin plug	
523	1	0700 300 585	5 pin plug	M12



INSTRUCTIONS TO REPLACE THE MICRO SWITCH



WEAR PARTS

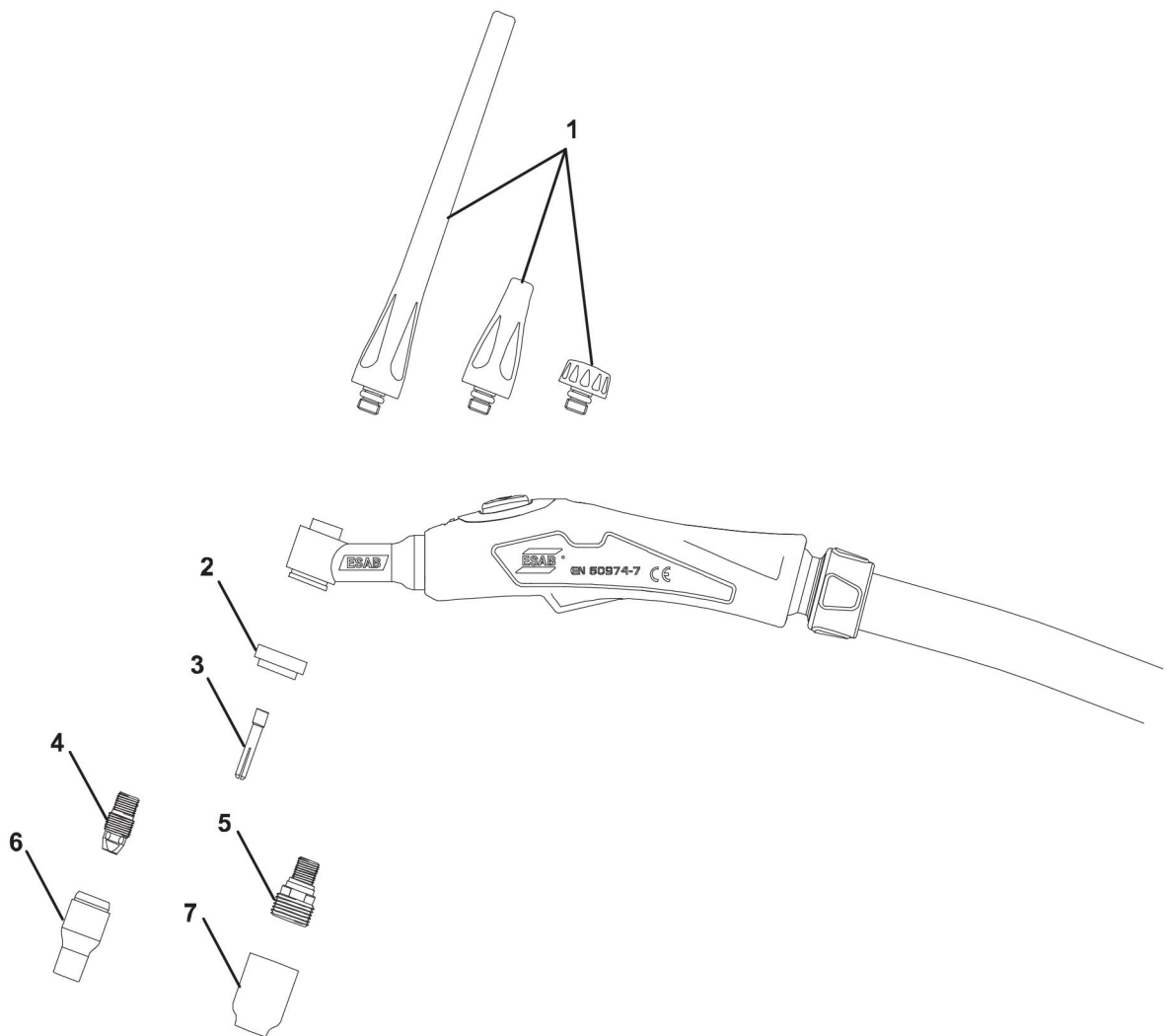
Tungsten electrodes Eco

Ordering no. 150 mm	Ordering no. 175 mm	Tungsten electrodes Eco	Diameter	Colour	Code	Current
-	0151 574 009	Wolfram, pure	Ø 1.6	Green	WP	AC
0151 574 245	-	Wolfram, pure	Ø 2.0	Green	WP	AC
0151 574 210	0151 574 010	Wolfram, pure	Ø 2.4	Green	WP	AC
0151 574 211	0151 574 011	Wolfram, pure	Ø 3.2	Green	WP	AC
-	0151 574 012	Wolfram, pure	Ø 4.0	Green	WP	AC
0151 574 237	0151 574 037	Cerium 2%	Ø 1.6	Grey	WC20	AC/DC
0151 574 242	-	Cerium 2%	Ø 2.0	Grey	WC20	AC/DC
0151 574 238	0151 574 038	Cerium 2%	Ø 2.4	Grey	WC20	AC/DC
0151 574 239	0151 574 039	Cerium 2%	Ø 3.2	Grey	WC20	AC/DC
0151 574 240	0151 574 040	Cerium 2%	Ø 4.0	Grey	WC20	AC/DC
0151 574 230	0151 574 050	Lantan 1.5%	Ø 1.0	Gold	WL15	AC/DC
0151 574 231	0151 574 051	Lantan 1.5%	Ø 1.6	Gold	WL15	AC/DC
0151 574 232	-	Lantan 1.5%	Ø 2.0	Gold	WL15	AC/DC
0151 574 233	0151 574 052	Lantan 1.5%	Ø 2.4	Gold	WL15	AC/DC
0151 574 234	0151 574 053	Lantan 1.5%	Ø 3.2	Gold	WL15	AC/DC
0151 574 235	0151 574 054	Lantan 1.5%	Ø 4.0	Gold	WL15	AC/DC
-	0151 574 055	Lantan 1.5%	Ø 4.8	Gold	WL15	AC/DC

Nozzles, collets, collet bodies and gas lenses for TXH torches

Bold = standard delivery

Item	Size	Denomination	Ordering no.
1	Long	Back cap	0365 310 051
	Medium		0365 310 050
	Short		0365 310 049
2		Heat shield	0366 960 017
3	Ø 1.0	Standard collet	0365 310 028
	Ø 1.6		0365 310 029
	Ø 2.0		0365 310 030
	Ø 2.4		0365 310 091
4	Ø 1.0	Standard collet body	0365 310 037
	Ø 1.6		0365 310 038
	Ø 2.0		0365 310 039
	Ø 2.4		0365 310 091
5	Ø 0.5	Gas lens body	0157 121 016
	Ø 1.0		0157 121 017
	Ø 1.6		0157 121 018
	Ø 3.2		0157 121 041
6	Ø 6.4 (No.4)	Standard ceramic cup	0365 310 044
	Ø 8.0 (No.5)		0365 310 045
	Ø 9.8 (No.6)		0365 310 046
	Ø 11.2 (No.7)		0365 310 047
	Ø 12.7 (No.8)		0365 310 048
	Ø 15.9 (No.10)		0588 000 440
7	Ø 6.4	Gas lens cup	0157 121 032
	Ø 8.0		0157 121 033
	Ø 9.8		0157 121 034
	Ø 11.2		0157 121 039
	Ø 12.7		0157 121 040



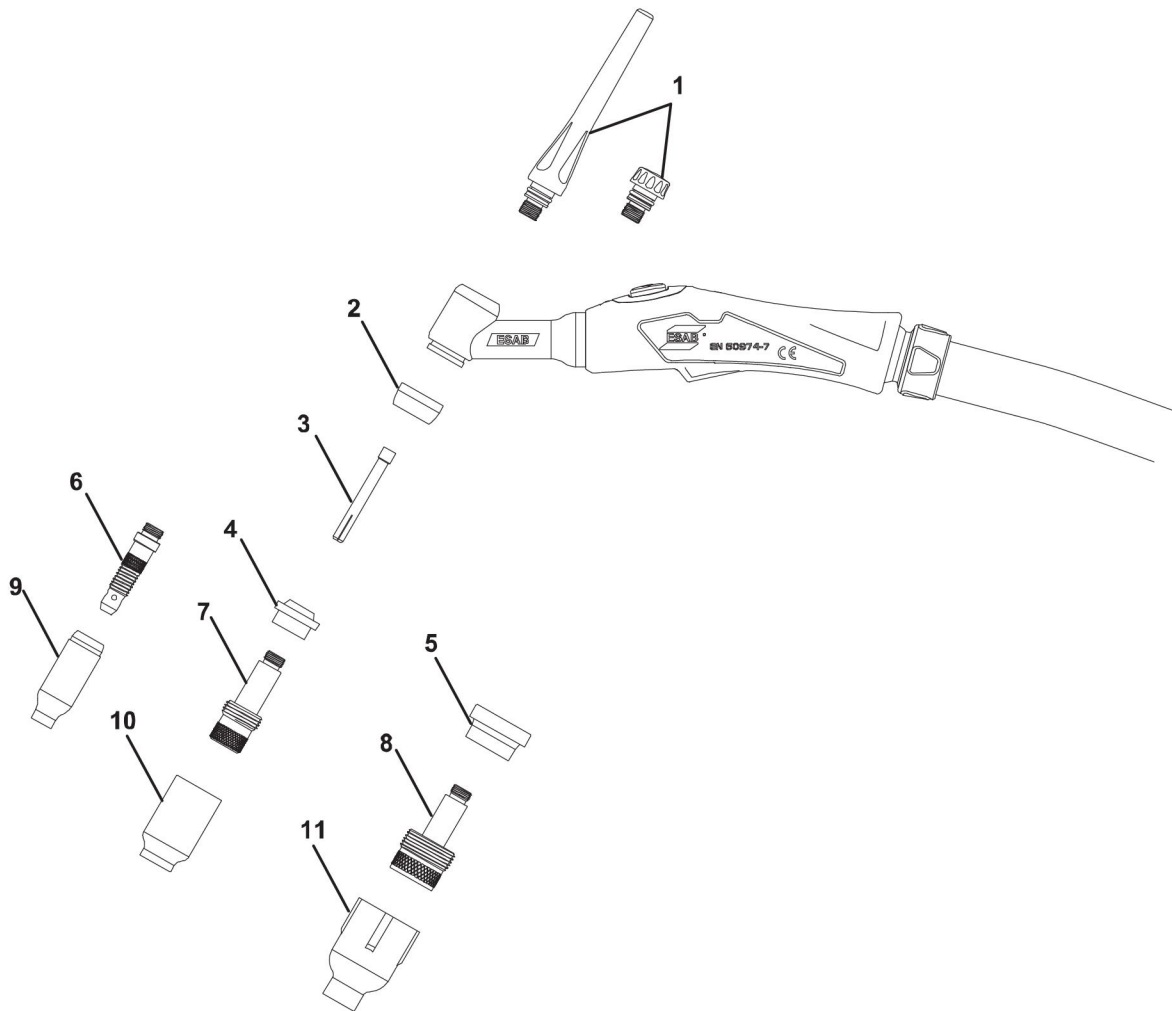
Nozzles, collets, collet bodies and gas lenses for TXH torches

Bold = standard delivery

Item	Size	Denomination	Ordering no.
1	Long	Back cap	0157 123 029
	Medium		0588 000 591
	Short		0157 123 028
2		Cup gasket	0366 960 016
3	Ø 1.0	Standard collet	0157 123 010
	Ø 1.6		0157 123 011
	Ø 2.4		0157 123 012
	Ø 3.2		0157 123 013
	Ø 4.0		0157 123 014
4		Gas lens insulator	0366 960 020
5		Insulator large gas lens	0366 960 021
6	Ø 1.0	Standard collet body	0157 123 015
	Ø 1.6		0157 123 016
	Ø 2.4		0157 123 017
	Ø 3.2		0157 123 018
	Ø 4.0-4.8		0157 123 019
7	Ø 1.0	Gas lens body	0157 123 021
	Ø 1.6		0157 123 022
	Ø 2.4		0157 123 023
	Ø 3.2		0157 123 024
	Ø 4.0		0157 123 025
8	Ø 1.0	Large diameter gas lens body	0157 123 083
	Ø 1.6		0157 123 084
	Ø 2.4		0157 123 085
	Ø 3.2		0157 123 086
	Ø 4.0-4.8		0157 123 087
9	Ø 6.4 (No.4)	Standard ceramic cup	0157 123 052
	Ø 8.0 (No.5)		0157 123 053
	Ø 9.8 (No.6)		0157 123 054
	Ø 11.2 (No.7)		0157 123 055
	Ø 12.7 (No.8)		0157 123 056
	Ø 15.9 (No.10)		0588 000 442
	Ø 19.0 (No.12)		0588 000 441

WEAR PARTS

10	Ø 6.4	Standard gas lens cup	0157 123 057
	Ø 8.0		0157 123 058
	Ø 9.8		0157 123 059
	Ø 11.2		0157 123 060
	Ø 12.7		0157 123 061
	Ø 17.5		0588 000 439
11	Ø 9.8	Large diameter gas lens cup	0157 123 088
	Ø 12.7		0157 123 089
	Ø 15.9		0588 000 438
	Ø 19.0		0157 123 098
	Ø 24.0		0588 000 437



Nozzles, collets, collet bodies and gas lenses for TXH torches

Bold = standard delivery

Item	Size	Denomination	Ordering no.
1	Long	Back cap	0157 123 029
	Medium		0588 000 591
	Short		0157 123 028
2		Cup gasket	0366 960 018
3	Ø 1.0	Standard collet	0157 123 010
	Ø 1.6		0157 123 011
4	Ø 2.4	Heavy duty collet	0157 123 077
	Ø 3.2		0157 123 078
	Ø 4.0		0157 123 079
	Ø 4.8		0157 123 074
5	Ø 0.5-2.4	Collet body	0157 123 081
	Ø 3.2-4.8		0157 123 082
6	Ø 6.4 (No.4)	Standard gas lens ceramic cup	0157 123 057
	Ø 8.0 (No.5)		0157 123 058
	Ø 9.8 (No.6)		0157 123 059
	Ø 11.2 (No.7)		0157 123 060
	Ø 12.7 (No.8)		0157 123 061
	Ø 17.5		0588 000 439
7	Ø 1.0	Gas lens body	0157 123 091
	Ø 1.6		0157 123 092
	Ø 2.4		0157 123 093
	Ø 3.2		0157 123 094
	Ø 4.0		0157 123 095
	Ø 4.8		0157 123 075

ESAB subsidiaries and representative offices

Europe

AUSTRIA

ESAB Ges.m.b.H
Vienna-Liesing
Tel: +43 1 888 25 11
Fax: +43 1 888 25 11 85

BELGIUM

S.A. ESAB N.V.
Heist-op-den-Berg
Tel: +32 15 25 79 30
Fax: +32 15 25 79 44

BULGARIA

ESAB Kft Representative Office
Sofia
Tel: +359 2 974 42 88
Fax: +359 2 974 42 88

THE CZECH REPUBLIC

ESAB VAMBERK s.r.o.
Vamberk
Tel: +420 2 819 40 885
Fax: +420 2 819 40 120

DENMARK

Aktieselskabet ESAB
Herlev
Tel: +45 36 30 01 11
Fax: +45 36 30 40 03

FINLAND

ESAB Oy
Helsinki
Tel: +358 9 547 761
Fax: +358 9 547 77 71

GREAT BRITAIN

ESAB Group (UK) Ltd
Waltham Cross
Tel: +44 1992 76 85 15
Fax: +44 1992 71 58 03

ESAB Automation Ltd
Andover

Tel: +44 1264 33 22 33
Fax: +44 1264 33 20 74

FRANCE

ESAB France S.A.
Cergy Pontoise
Tel: +33 1 30 75 55 00
Fax: +33 1 30 75 55 24

GERMANY

ESAB Welding & Cutting GmbH
Langenfeld
Tel: +49 2173 3945-0
Fax: +49 2173 3945-218

HUNGARY

ESAB Kft
Budapest
Tel: +36 1 20 44 182
Fax: +36 1 20 44 186

ITALY

ESAB Saldatura S.p.A.
Bareggio (Mi)
Tel: +39 02 97 96 8.1
Fax: +39 02 97 96 87 01

THE NETHERLANDS

ESAB Nederland B.V.
Amersfoort
Tel: +31 33 422 35 55
Fax: +31 33 422 35 44

NORWAY

AS ESAB
Larvik
Tel: +47 33 12 10 00
Fax: +47 33 11 52 03

POLAND

ESAB Sp.zo.o.
Katowice
Tel: +48 32 351 11 00
Fax: +48 32 351 11 20

PORTUGAL

ESAB Lda
Lisbon
Tel: +351 8 310 960
Fax: +351 1 859 1277

ROMANIA

ESAB Romania Trading SRL
Bucharest
Tel: +40 316 900 600
Fax: +40 316 900 601

RUSSIA

LLC ESAB
Moscow
Tel: +7 (495) 663 20 08
Fax: +7 (495) 663 20 09

SLOVAKIA

ESAB Slovakia s.r.o.
Bratislava
Tel: +421 7 44 88 24 26
Fax: +421 7 44 88 87 41

SPAIN

ESAB Ibérica S.A.
San Fernando de Henares
(MADRID)
Tel: +34 91 878 3600
Fax: +34 91 802 3461

SWEDEN

ESAB Sverige AB
Gothenburg
Tel: +46 31 50 95 00
Fax: +46 31 50 92 22

ESAB International AB

Gothenburg
Tel: +46 31 50 90 00
Fax: +46 31 50 93 60

SWITZERLAND

ESAB Europe GmbH
Baar
Tel: +41 1 741 25 25
Fax: +41 1 740 30 55

UKRAINE

ESAB Ukraine LLC
Kiev
Tel: +38 (044) 501 23 24
Fax: +38 (044) 575 21 88

North and South America

ARGENTINA

CONARCO
Buenos Aires
Tel: +54 11 4 753 4039
Fax: +54 11 4 753 6313

BRAZIL

ESAB S.A.
Contagem-MG
Tel: +55 31 2191 4333
Fax: +55 31 2191 4440

CANADA

ESAB Group Canada Inc.
Mississauga, Ontario
Tel: +1 905 670 0220
Fax: +1 905 670 4879

MEXICO

ESAB Mexico S.A.
Monterrey
Tel: +52 8 350 5959
Fax: +52 8 350 7554

USA

ESAB Welding & Cutting
Products
Florence, SC
Tel: +1 843 669 4411
Fax: +1 843 664 5748

Asia/Pacific

AUSTRALIA

ESAB South Pacific
Archerfield BC QLD 4108
Tel: +61 1300 372 228
Fax: +61 7 3711 2328

CHINA

Shanghai ESAB A/P
Shanghai
Tel: +86 21 2326 3000
Fax: +86 21 6566 6622

INDIA

ESAB India Ltd
Calcutta
Tel: +91 33 478 45 17
Fax: +91 33 468 18 80

INDONESIA

P.T. ESABindo Pratama
Jakarta
Tel: +62 21 460 0188
Fax: +62 21 461 2929

JAPAN

ESAB Japan
Tokyo
Tel: +81 45 670 7073
Fax: +81 45 670 7001

MALAYSIA

ESAB (Malaysia) Snd Bhd
USJ
Tel: +603 8023 7835
Fax: +603 8023 0225

SINGAPORE

ESAB Asia/Pacific Pte Ltd
Singapore
Tel: +65 6861 43 22
Fax: +65 6861 31 95

SOUTH KOREA

ESAB SeAH Corporation
Kyungnam
Tel: +82 55 269 8170
Fax: +82 55 289 8864

UNITED ARAB EMIRATES

ESAB Middle East FZE
Dubai
Tel: +971 4 887 21 11
Fax: +971 4 887 22 63

Africa

EGYPT

ESAB Egypt
Dokki-Cairo
Tel: +20 2 390 96 69
Fax: +20 2 393 32 13

SOUTH AFRICA

ESAB Africa Welding & Cutting
Ltd
Durbanville 7570 - Cape Town
Tel: +27 (0)21 975 8924

Distributors

For addresses and phone numbers to our distributors in other countries, please visit our home page

www.esab.com



www.esab.com

